



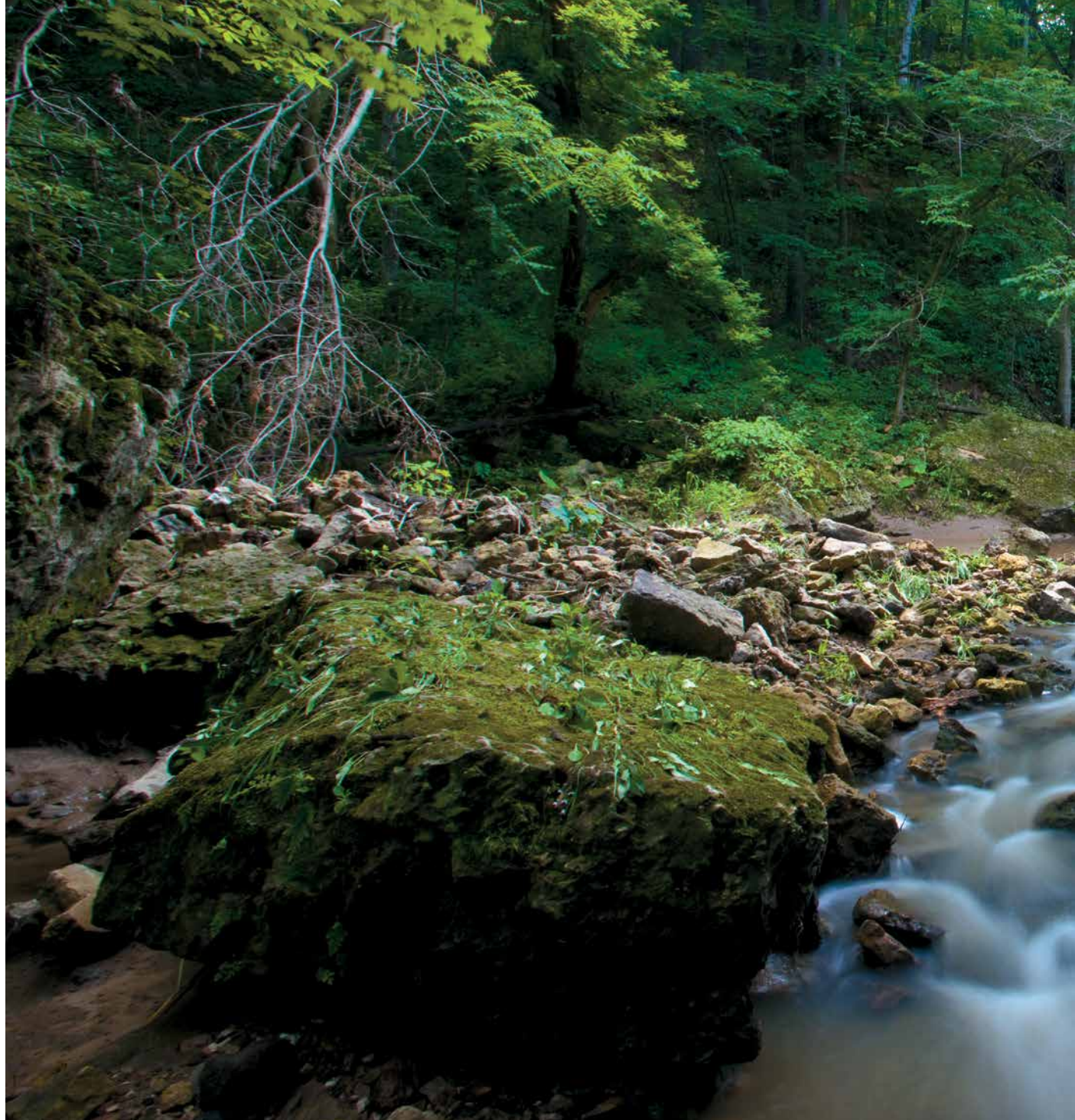
Iowa's Scenic & Wild Beauty

Fall has arrived at White Pine Hollow, and colorful leaves adorn Pine Hollow Creek. Limestone karst blocks, covered in mosses, lichens, and liverworts, decorate the creek's edge.

Iowa's Scenic & Wild Beauty

When my thoughts turn to the most scenic and wild places in Iowa, they always carry me back to one very special place — White Pine Hollow State Preserve. Tucked up in the far northwest corner of Dubuque County, at the southern edge of the Driftless Area, this crown jewel of Iowa's Preserve system represents one of the wildest of Iowa's natural places.

Over the millennia, stunningly beautiful Pine Hollow Creek has carved a deep canyon, flanked by limestone walls, with giant karst blocks lining the water's edge. Many unusual birds and plants, some found hardly anywhere else in the state, call this geographic wonder their home.





The greens of summer dominate White Pine Hollow in this streamside image. In a constant state of erosion, the canyon walls are steadily breaking down and adding to the accumulation of limestone rubble along the edges of Pine Hollow Creek.

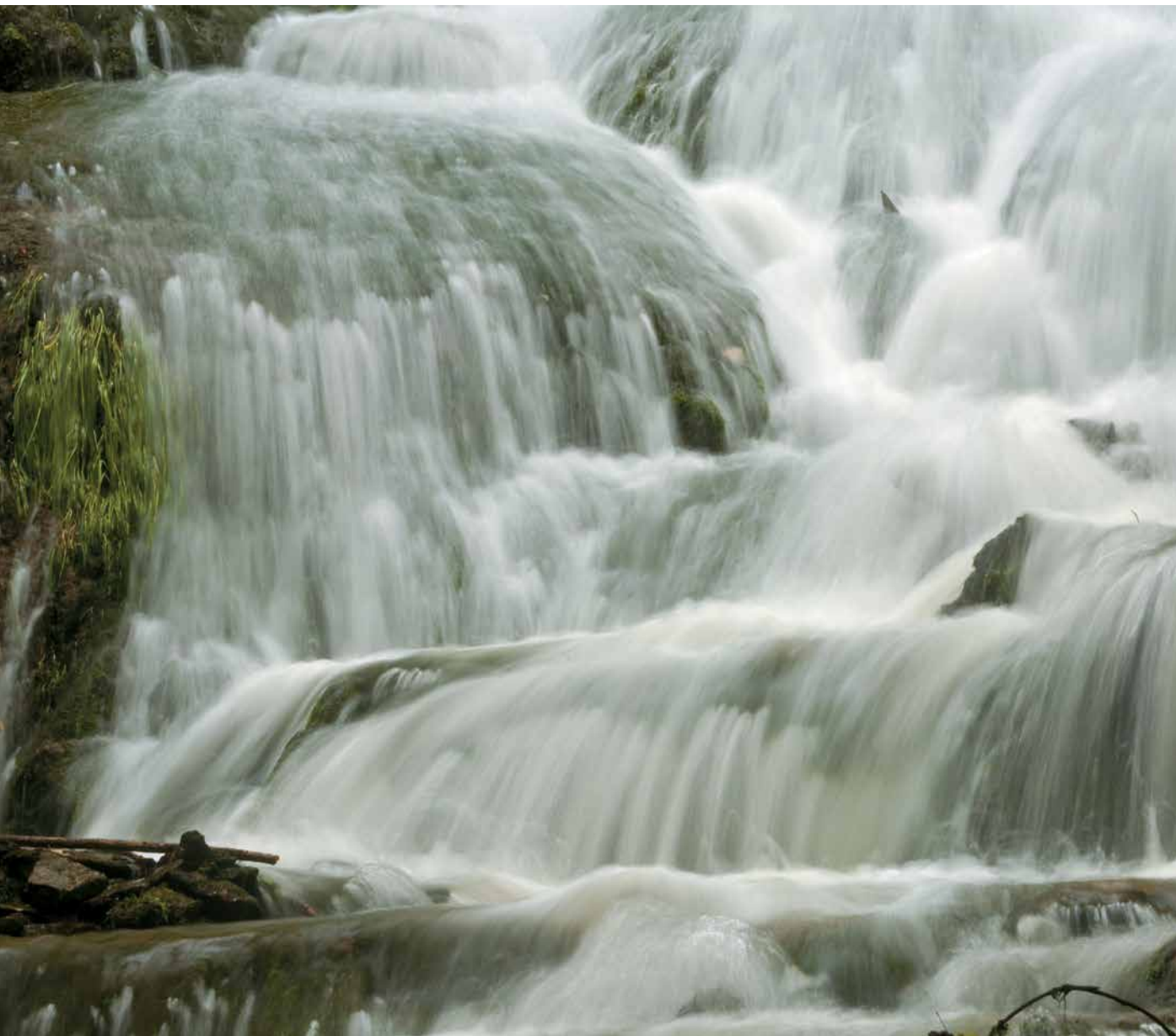


Photographed from the living room window of a friend's home in Lansing, overlooking the Lansing Bridge, which crosses the Mississippi River (right, this page).

Morning fog creates a visually layered landscape, when viewed from a hilltop overlooking Upper Iowa River Valley farmland, near Decorah (opposite page).







Dunning's Spring (opposite page) is a favorite northeast Iowa attraction. Located on a hillside overlooking the Upper Iowa River, it's just a short walk from downtown Decorah.

The cascading water fall of Dunning's Spring (left, this page) provides many framing options for the avid photographer.

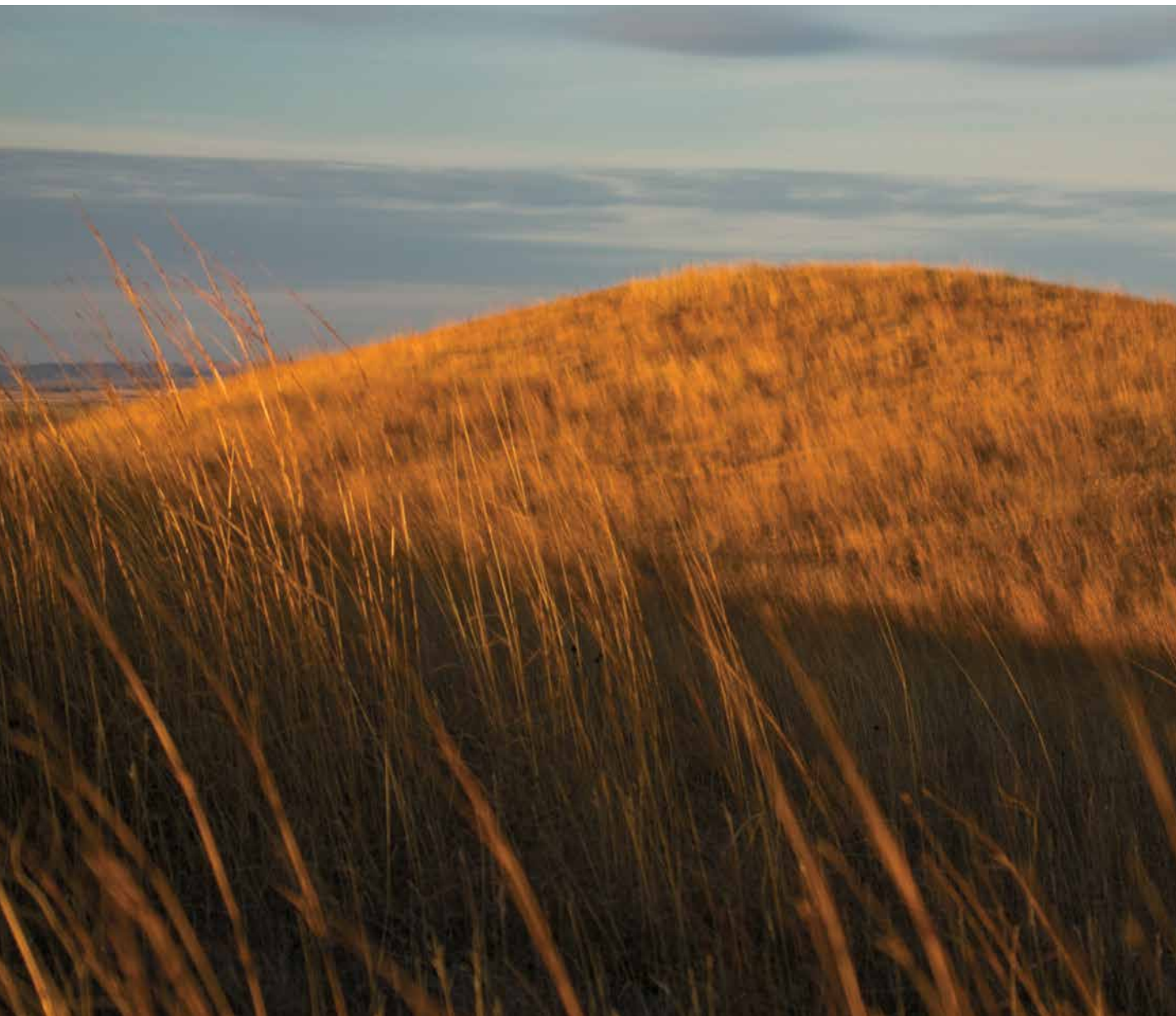


A heavy dew covers a foreground of this image. Butterfly milkweed and various prairie grasses are clearly visible at Tipton Prairie, west of Rippey (right, this page).

On a hillside overlooking the Skunk River Valley, Jasper Prairie wildflowers (opposite page) are in peak bloom during the month of July.





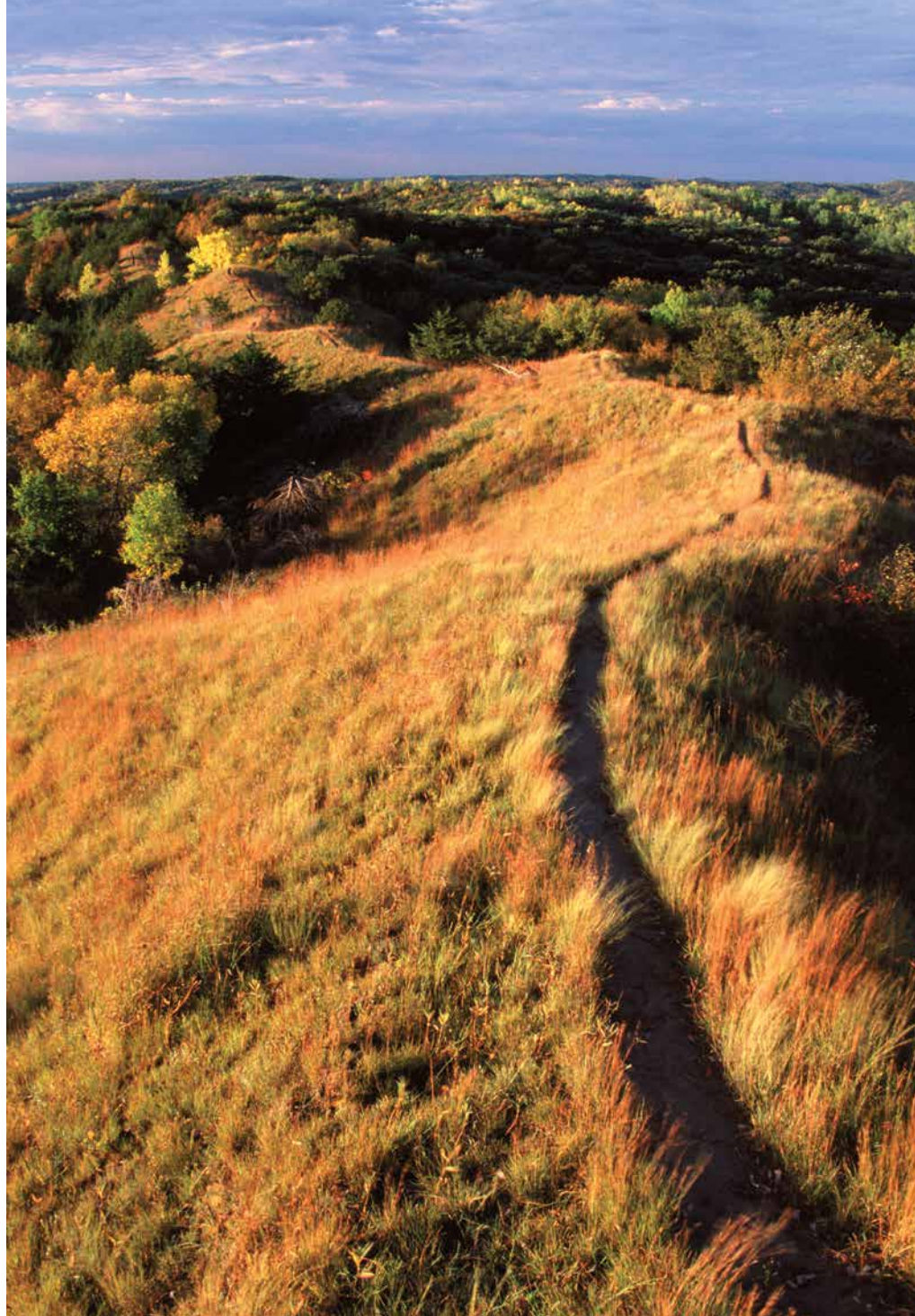


A hilltop covered with blooming germander (opposite page) dominates the early morning view at Jasper Prairie, near Reasoner.

Indian grass and other prairie grasses dominate the hills of The Nature Conservancy's Broken Kettle Grasslands, located along highway 12, north of Sioux City. The golden colors of fall are brightened by the low angle of the setting sun (left, this page).

The Loess Hills State Forest overlook provides a stunning view of the hills to the south (right, this page). As the first rays of morning sun strike the land, the remnants of a recent thunderstorm can be seen moving away in the distance.

Freda Hafner Kettlehole (opposite page) was created when glaciers melted, approximately 12,000 years ago. Located just southwest of Lake Okoboji, it is an enduring relic of our ice age past.









Prairie grasses with a huge Burr Oak are visible in the foreground from this Loess Hills vantage point (opposite page). They lead your eye up to the Ingemann Danish Church steeple across the valley.

The chimney rocks of the Upper Iowa River (left, this page) can be seen clearly from a canoe. One of my favorite floats starts at Kendallville and ends at Bluffton.

There's nothing quite like a blazing sunset over a northern Iowa marsh (right, this page) during the spring waterfowl migration. The sights and sounds of the chattering ducks and geese let you know that spring is on its way.

Doolittle Prairie puts on a show every July (opposite page). Blazing Star, Rattlesnake Master, and Compass Plant contribute vibrant colors to this summer scene.

