

## Safari Proposal for Ty

# Into the Botswana Wild Special Photographic Safari

December 2013



17921 W. 59<sup>th</sup> Ave, Golden, CO 80403  
720-497-1250 [bgiven@thewildsource.com](mailto:bgiven@thewildsource.com)  
[www.thewildsource.com](http://www.thewildsource.com)

## Itinerary

- Dec 03 Arrive Johannesburg. Proceed to the City Lodge Hotel inside of O.R. Tambo International Airport
- Dec 04 Depart on 11:30 a.m. Air Botswana flight to Kasane, Botswana arriving at 13:50. Met and transferred to Chobe Game Lodge.
- Dec 05 Chobe Game Lodge
- Dec 06 Following morning game drive bush flight to Kwando Lagoon Camp
- Dec 07 Lagoon Camp
- Dec 08 Lagoon Camp
- Dec 09 Lagoon Camp
- Dec 10 Following morning activity bush flight to Kwara Camp
- Dec 11 Kwara Camp
- Dec 12 Kwara Camp
- Dec 13 Kwara Camp
- Dec 14 Following morning activity bush flight to Tau Pan Camp.
- Dec 15 Tau Pan Camp
- Dec 16 Tau Pan Camp
- Dec 17 Following morning activity and brunch bush flight to Maun in time to connect with Air Botswana afternoon departure to Johannesburg arriving in time to connect with your homeward bound flight.

### **Safari Cost \$7,950 per person sharing**

\*On safari in Botswana this includes all internal bush flights between camps, road transfers, accommodation, meals, drinks (except premium alcohol), laundry and activities. Includes one dedicated vehicle row per photographer and extra weight allowance on the internal bush flights. In Johannesburg includes accommodation and breakfast.

### Not Included Out of Pocket Costs to Consider

International Air between home and Johannesburg. International air from Johannesburg to Kasane and from Maun to Johannesburg.

Tips – On safari I recommend \$25 per person per day -- \$10 to your guide, \$5 to the tracker, and \$10 to the staff. In city hotels \$1 a bag.

Dinner in Johannesburg

Travel Insurance and Health Preparation

Note: this is a pay by check discounted price. We can process credit cards but all credit payments are 4% higher.

## Introduction

Northern Botswana is considered by many to be the premier safari destination. In Botswana wildlife sightings are astounding, camps are set in magical locations, service is supreme and the standard of guiding is very high. Due to the remote nature of the camps you will have short flights between locations, an incredibly scenic way to change camps as you take in the scenery and can often spot wildlife below. Special considerations have been planned for your photographic interests with extra weight allowance purchased allowing up to 140 lbs. of luggage per photographer on bush flights. Special vehicle arrangements have also been made to ensure that each photographer has their own dedicated row in open sided vehicles throughout the safari.



This safari is custom designed to give you ample time to explore all five of Botswana's premier areas; Chobe National Park (Riverfront area), Kwando/Linyanti Marsh area, Okavango Delta, Central Kalahari Game Reserve and the Makgadikgadi Salt Pans. The itinerary includes two private concession areas (Kwara and Lagoon). The private concessions are ideal for photography as they are exclusive with no vehicle crowds, off roading and night drives so you can maximize the best light and activity hours of the day rather than be restricted by park rules and return after dark while spot lighting for the rarely seen nocturnal species. The desert and Pan areas are very lightly visited and are extreme wilderness so while you will have a few more regulations you will have lots of space to yourselves. You will have excellent opportunities to photograph on game drives, night drives, and by boat. These habitats support an incredible diversity of wildlife and it is likely that you will see between 35 and 40 species of mammals while also enjoying stellar bird life, including breeding rookeries.

## **City Lodge at O.R. Tambo International Airport – 1 Night**

Based at Africa's busiest airport, City Lodge at OR Tambo Airport provides the most convenient accommodation for those who just need a night in Johannesburg between flights. There's no need to shuttle as you have the ultimate ease of travel by staying right at the Airport. City Lodge is a well known value chain in South Africa that delivers a comfortable and secure stay for a good price making it perfect as an airport pass through hotel.



OR Tambo Airport offers a number of services from banking to a wide range of retailers, so whether it's a good book or a scrumptious meal, the airport's facilities have everything you need all in easy walking distance.

The hotel boasts boardroom and conference facilities, a fitness room as well as a deck with a pool and a large commercial area with a coffee shop. The hotel also serves an excellent full English breakfast that is included.

### **Rooms**

- Spacious air-conditioned room with queen or twin beds
- Flat screen Television (MNet and DSTV) – Satellite channels offering exciting sport, breaking news and great movies.
- En-Suite Bathroom with bath and separate shower.
- Tea and coffee making facilities
- Wireless Internet Access available in all rooms
- Electronic safe large enough to accommodate a laptop
- Desk with great lighting and plugs for easy connectivity
- Telephone

## Chobe Game Lodge, Chobe Riverfront – 2 Nights

Chobe is the most well known National Park and wildlife area in Botswana. It is famed for its enormous elephant populations and the exceptional viewing possible by boat on the Chobe River, one of the best water based wildlife viewing opportunity in the world.



The Chobe River is a draw for elephants, buffalo and many more species. A boat trip is the ultimate way to see the variety of animals along the river and this is Botswana's best location for seeing big crocs as well as a premier birding area. Game drives can be very productive too with rare antelope such as sable, roan and puku often seen. It is a productive area for lions and holds Africa's largest elephant population. Because you are in a National Park vehicles must stay on the roads, and particularly in the riverfront area this can lead to some crowding at special sightings.

Chobe Game Lodge is the only permanent Lodge situated inside of Chobe National Park in the riverfront area. This makes it the ideal base to explore the park and the riverfront with the advantage of being out earlier and later than the majority of tourists who need to enter and exit the park gate and stay in Kasane.

Chobe Game Lodge offers a choice of land or water-based activities and the most complete game experience in the Chobe National Park. Early morning and

late afternoon game drives are conducted by expert guides in open sided 4x4 vehicles to ensure maximum visibility of Chobe National Park's spectacular scenery and abundant wildlife. Meanwhile, riverside game viewing is conducted by small and highly manoeuvrable boats, perfect for morning or sunset cruises.



Chobe Game Lodge can accommodate up to 94 people in total luxury and the extensive facilities include a large swimming pool with adjacent terrace and a grassy riverside boma area where a Marimba band or traditional dancers can perform. Meals are catered for at the terrace restaurant, and themed BBQs are regularly held at our boma on the Chobe River's grassy banks. Each of the 47 rooms at the lodge is river facing and air conditioned, featuring overhead fans, complimentary mini bar, en-suite bathrooms and private terrace.



## Kwando Lagoon Camp, Kwando/Linyanti Area – 4 Nights



The renowned Kwando concession is over half a million acres but contains just two small camps that are 30 kilometers apart. Lagoon has built its reputation on action packed gameviewing, with dedicated tracking, tremendous guiding and making the pursuit of wildlife sightings the priority. Kwando uses unique vehicles, the URI, a workhorse vehicle that was custom designed by a farmer in the Kalahari desert of Namibia to deal with the rigors of off road driving and this allows for exciting off road pursuit under special circumstances such as African wild dogs on the hunt.



Predators are diverse with lion, wild dog, hyena, leopard and cheetah all frequently seen, currently wild dogs and cheetah are especially prevalent. Night drives can be particularly productive with lots of smaller carnivores in the area such as serval, caracal, honey badger, African wildcat, genet and civet. In areas of open grasslands and pan systems there is a plentiful variety of game with impala, red lechwe, steenbok, reedbuck, wildebeest, buffalo, giraffe, tsessebe, kudu, zebra, waterbuck, sable, and roan in the area.

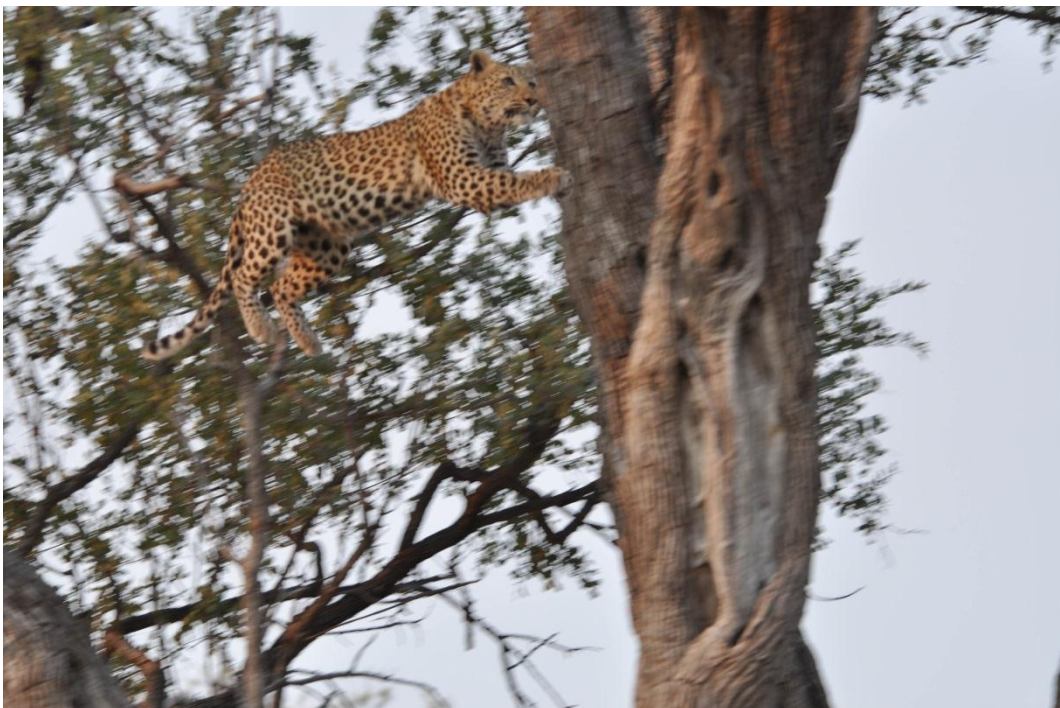


Kwando Lagoon Camp was just rebuilt in March 2011 and comprises 8 spaciouly designed tents with views over the private lagoon formed by the ever-changing Kwando River. Each tent comprises a bedroom area with a spacious bathroom en suite. The bathroom has a double basin set in an indigenous Mukwa wood stand and a flush loo. The spacious outdoor reeded showers capture the essence of Africa that is Kwando.

The tents are furnished in the best teak furniture that Zimbabwean master craftsmen can create. The shady cool interiors are produced by a canvas flysheet under shade cloth, which are also set under massive Ebony and Marula trees with shady lawns. A small plunge pool is available to cool off during the long summer days. The resident hippos entertain our guests as they sit in the deck chairs, on the decks in front of their tents.



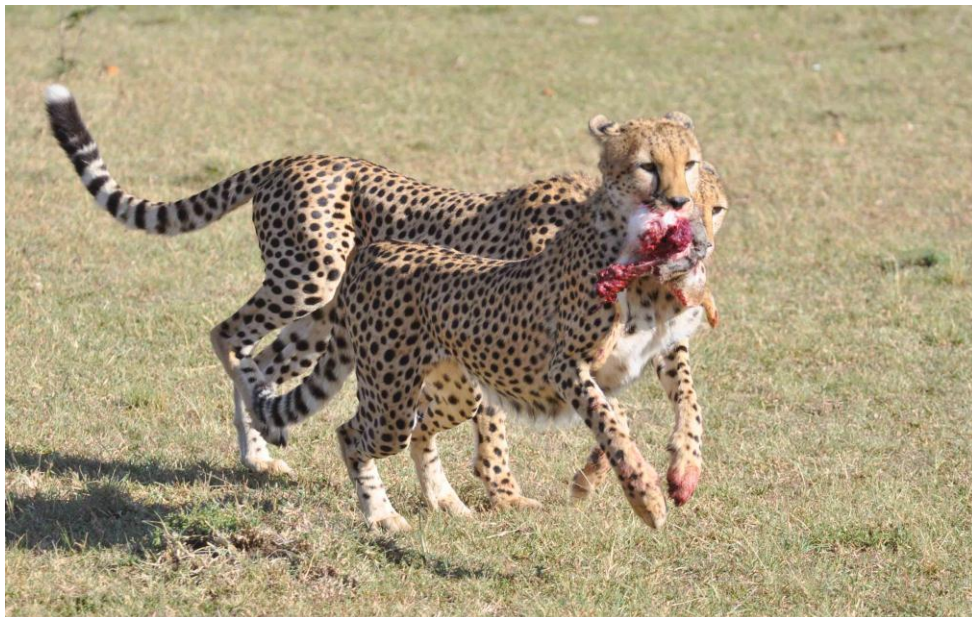
There is a wonderful communal area to relax during the mid-day where you may possibly see an elephant approach, as well as a plunge pool. Food is hearty and the staff provides a very welcoming atmosphere at this camp. Activities here focus on game drives and boat cruises, which is appropriate because it is such a productive area and the guide/tracker system is a point of emphasis to deliver the maximum experience.



## Kwara Camp, Okavango Delta for 4 Nights



Kwara Camp is located within one of the largest (almost half a million acres) private concession areas in all of Botswana, and it is also one of the richest for wildlife. The area is very diverse including permanent waters of the Okavango Delta, wide open plains, mopane woodlands, and palm islands. Kwara is part of the legendary Kwando Camps, known for their hard core dedication for game viewing. Kwara concession is rich in predators and this area has been one of the most productive for cheetah, leopard, and lion sightings. For a couple years now a coalition of three cheetah brothers have been frequently sighted, and there is an amazing coalition of seven male lions associated with the seven sisters pride.





Kwara Camp is able to offer a great diversity of activities including power boating, mokoro (dug out canoe) trips, walks and game drives. Kwara camp comprises just 8 twin-bedded rustic safari style tents accommodating a maximum of 16 guests. The tents are built on raised teak decks each with en-suite facilities. The intimate dining and lounge area is under thatch, built around a large shade tree overlooking the lagoon. Kwara has a small gift shop, lounge, dining room and small plunge pool. The camp is simple but comfortable and the setting is spectacular with wonderful sounds from hippos and birds.



### **Tau Pan Camp, Central Kalahari Game Reserve -- 3 Nights**

The Botswana government decided to tender rights for a very limited number of private camps in some of the most wild parks that have previously only been available to mobile safaris and self drive public campers. Kwando Safaris won the right to build one of only two permanent camps being established inside the enormous Central Kalahari Game Reserve. Tau Pan Camp opened on March 1<sup>st</sup> of 2009 and has delivered a wonderful experience.



Tau Pan Camp will be located inside the Central Kalahari Game Reserve (CKGR), a magical wilderness that is the second largest protected area in all of Africa (over 52,000 sq. km). With a very limited number of public campsites and now the establishment of just two small permanent Camps it remains one of the least visited as well. This is a place to experience solitude and to feel dwarfed by the expansive landscape that surrounds you.



For those with an appreciation of wilderness this vast emptiness can be soul stirring. The CKGR is the opposite of most areas in that the rains correspond with the ideal time for game viewing because the rains actually draw the animals together rather than disperse them. Typically from December to April the rains produce a wonderful bounty of sweet grasses on the pans and ancient river beds in the northern part of the reserve drawing together thousands of springbok and oryx along with many red hartebeest, eland, and blue wildebeest. Thunder storms can be violent and spectacular and rain is usually short lived. Predators within the CKGR tend to have enormous ranges and occur at low density but they also converge to take advantage of the congregations of herbivores. Due to the low density of other predators this is one of the strongholds for cheetah. As for lions the black-maned lions of the Kalahari have an almost mythical status. Lions here often run on the large size, in fact bordering on gigantic, but there is also a curiosity and supreme confidence that seems to go even beyond that of lions in other areas. Lions are sighted with regularity in the company of the herds during the rains and near the dwindling water sources in the dry season.

Once the rains halt the wildlife disperses far and wide across the CKGR making game viewing focus on the few remaining water resources and the sightings are sparse compared to most traditional safari areas. During this time, generally May through November the CKGR remains an intriguing place for visitors that can appreciate the pure wilderness of one of the largest protected areas on earth, and those with patience can be rewarded with amazing action at waterholes as well as discover interesting smaller creatures such as meerkats, bat-eared foxes,

and leopard tortoises but there are likely to be some quiet hours where little wildlife is seen as well.



Tau Pan Camp is situated on the edge of Tau Pan, one of the most beautiful and wildlife rich areas of the CKGR. From here game drives are able to reach the famed Deception Valley as well, the location of the largest herbivore concentrations during the green season. Tau Pan Camp features 8 desert purpose structures that are thatched with solid insulated walls to stay cool in heat and warm in the cold. The camp operates on solar power with a generator as back up. All units have ceiling fans, outside showers and private viewing decks. The main area contains a viewing deck, lounge, dining area, library, curio shop, and pool. Activities focus on game drives in open 4 x 4 vehicles as well as game walks with bushmen learning their ancient skills. Unlike private concessions here you have park rules where you have to stay on road and there are no night drives.