

**Safari Proposal for Ty**  
**Into the Botswana Wild Special Photographic Safari**  
**November/December 2012**



**THE WILD SOURCE**  
17921 W. 59<sup>th</sup> Ave, Golden, CO 80403  
720-497-1250 [bgiven@thewildsource.com](mailto:bgiven@thewildsource.com)  
[www.thewildsource.com](http://www.thewildsource.com)

## Itinerary

- Nov 27 Arrive Johannesburg. Proceed to the City Lodge Hotel inside of O.R. Tambo International Airport
- Nov 28 Depart on 11:30 a.m. Air Botswana flight to Kasane, Botswana arriving at 13:50. Met and transferred to Chobe Game Lodge.
- Nov 29 Chobe Game Lodge
- Nov 30 Following morning activity bush flight to Savute area of Chobe. Camp Savuti.
- Dec 01 Camp Savuti
- Dec 02 Camp Savuti
- Dec 03 Following morning game drive bush flight to Mapula Lodge
- Dec 04 Mapula Lodge
- Dec 05 Mapula Lodge
- Dec 06 Following morning activity bush flight to Kwara Camp
- Dec 07 Kwara Camp
- Dec 08 Kwara Camp
- Dec 09 Following morning activity bush flight to Kwando Lagoon Camp.
- Dec 10 Lagoon Camp
- Dec 11 Lagoon Camp
- Dec 12 Following morning activity and brunch bush flight to Maun in time to connect with Air Botswana 14:50 departure to Johannesburg arriving at 16:30.

### **Safari Cost \$7,950 per person**

\*On safari in Botswana this includes all internal bush flights between camps, road transfers, accommodation, meals, drinks (except premium alcohol), laundry and activities. In Johannesburg includes accommodation and breakfast.

### Not Included Out of Pocket Costs to Consider

International Air between home and Johannesburg. International air from Johannesburg to Kasane and from Maun to Johannesburg.

Tips – On safari I recommend \$20 per person per day -- \$10 to your guide, \$5 to the tracker, and \$5 to the staff. In city hotels \$1 a bag.

Dinner in Johannesburg

Travel Insurance – we sell Travel Guard or you are welcome to secure your own policy

Health Preparation

Note: this is a pay by check discounted price. Credit card price is 4% additional.

## Introduction

Northern Botswana is considered by many to be the premier safari destination. In Botswana wildlife sightings are astounding, camps are set in magical locations, service is supreme and the standard of guiding is very high. Due to the remote nature of the camps you will have short flights between locations, an incredibly scenic way to change camps as you take in the scenery and can often spot wildlife below. Special considerations have been planned for your photographic interests with extra weight allowance purchased allowing up to 140 lbs. of luggage per photographer on bush flights. Special vehicle arrangements have also been made to ensure that each photographer has their own dedicated row in open sided vehicles throughout the safari.



This safari is custom designed to give you ample time to explore three of Botswana's premier wildlife areas; Chobe National Park (Riverfront & Savute), Okavango Delta, and the Kwando Concession. Your first 2 camps will be under park rules followed by three camps in private concession areas. The private concessions are ideal for photography as they are exclusive with no vehicle crowds, off roading and night drives so you can maximize the best light and activity hours of the day rather than be restricted by park rules and return after dark while spot lighting for the rarely seen nocturnal species. You will have excellent opportunities to photograph on game drives, night drives, and by boat. These habitats support an incredible diversity of wildlife and it is likely that you will see between 30 and 40 species of mammals while also enjoying stellar bird life, including breeding rookeries.

## **City Lodge at O.R. Tambo International Airport – 1 Night**

Based at Africa's busiest airport, City Lodge at OR Tambo Airport provides the most convenient accommodation for those who just need a night in Johannesburg between flights. There's no need to shuttle as you have the ultimate ease of travel by staying right at the Airport. City Lodge is a well known value chain in South Africa that delivers a comfortable and secure stay for a good price making it perfect as an airport pass through hotel.



OR Tambo Airport offers a number of services from banking to a wide range of retailers, so whether it's a good book or a scrumptious meal, the airport's facilities have everything you need all in easy walking distance.

The hotel boasts boardroom and conference facilities, a fitness room as well as a deck with a pool and a large commercial area with a coffee shop. The hotel also serves an excellent full English breakfast that is included.

### **Rooms**

- Spacious air-conditioned room with queen or twin beds
- Flat screen Television (MNet and DSTV) – Satellite channels offering exciting sport, breaking news and great movies.
- En-Suite Bathroom with bath and separate shower.
- Tea and coffee making facilities
- Wireless Internet Access available in all rooms
- Electronic safe large enough to accommodate a laptop
- Desk with great lighting and plugs for easy connectivity
- Telephone

## **Chobe Game Lodge, Chobe Riverfront – 2 Nights**

Chobe is the most well known National Park and wildlife area in Botswana. It is famed for its enormous elephant populations and the exceptional viewing possible by boat on the Chobe River, one of the best water based wildlife viewing opportunity in the world.



The Chobe River is a draw for elephants, buffalo and many more species. A boat trip is the ultimate way to see the variety of animals along the river and this is Botswana's best location for seeing big crocs as well as a premier birding area. Game drives can be very productive too with rare antelope such as sable, roan and puku often seen. It is a productive area for lions and holds Africa's largest elephant population. Because you are in a National Park vehicles must stay on the roads, and particularly in the riverfront area this can lead to some crowding at special sightings.

Chobe Game Lodge is the only permanent Lodge situated inside of Chobe National Park in the riverfront area. This makes it the ideal base to explore the park and the riverfront with the advantage of being out earlier and later than the majority of tourists who need to enter and exit the park gate and stay in Kasane.

Chobe Game Lodge offers a choice of land or water-based activities and the most complete game experience in the Chobe National Park. Early morning and

late afternoon game drives are conducted by expert guides in open sided 4x4 vehicles to ensure maximum visibility of Chobe National Park's spectacular scenery and abundant wildlife. Meanwhile, riverside game viewing is conducted by small and highly manoeuvrable boats, perfect for morning or sunset cruises.



Chobe Game Lodge can accommodate up to 94 people in total luxury and the extensive facilities include a large swimming pool with adjacent terrace and a grassy riverside boma area where a Marimba band or traditional dancers can perform. Meals are catered for at the terrace restaurant, and themed BBQs are regularly held at our boma on the Chobe River's grassy banks. Each of the 47 rooms at the lodge is river facing and air conditioned, featuring overhead fans, complimentary mini bar, en-suite bathrooms and private terrace.



## Camp Savuti, Savute Area of Chobe National Park – 3 Nights



Savuti is a remote section of Chobe National Park that is renowned for its wildlife and high drama, with a number of famous films including *Eternal Enemies: Lions and Hyenas* made in the area. Lions are plentiful and are in constant competition with huge spotted hyena clans. African wild dog and cheetah often move through the area and it has become one of Botswana's best places to view leopards. In 2010 for the first time in 28 years the channel once again flows through Savuti to the Savute Marsh creating a particularly rich oasis for wildlife in this otherwise dry area.





Sitting on the banks of Botswana's fabled Stolen River, you will find Camp Savuti in a setting of singular beauty. With the Savuti channel again flowing you can witness the rebound of this dynamic eco system renowned for its large concentration of elephant and lion and their troubled relationship.





Camp Savuti opened in 2011. It is a small and intimate camp accommodating a maximum of 10 guests in comfort and style, creating a new type of “luxury camping” in a public park area. To further enhance the experience the tents have been placed to ensure privacy.

At Camp Savuti 5 meru tents have been placed on platforms overlooking the Savuti Channel. The tents are large and spacious with en-suite facilities. The guest area consists of an intimate lounge, bar and dining area overlooking the Savuti Channel. Game drives unlock the wonders of nature that abound in the Savuti area.



## Mapula Lodge, Okavango Delta – 3 Nights



Mapula Lodge is set in a magical location in the far north of the Okavango Delta making Mapula one of the most remote camps in Botswana. This happens to be my personal favorite place because of the tremendous community staffing the Mapula Lodge and the welcoming atmosphere they provide, the scenic location of the camp, the outstanding accommodation that is very comfortable but not over the top, and most of all the focus on finding wildlife. The Mapula Lodge guides are outstanding and work with trackers to actively pursue predators. The area is vast and diverse as is the wildlife. With a high season cost that is far below other top camps I believe Mapula Lodge is the best value luxury camp in Botswana.



Mapula is best known for its African wild dog pack that can provide some exciting sightings but they are ranging far and wide these days. Lions are commonly seen, featuring three big males and they often hunt buffalo, while hippos and elephants frequent the lagoon in front of camp. As of late leopard sightings have become outstanding. Smaller cats, serval and caracal are much rarer sightings but seem to be spotted with a fair frequency at Mapula. The area is well known for the elegant sable antelope that is rarely seen in other areas and as the area contains the only permanent water for many kilometers drawing elephants and buffalo into the area. Birdlife at Mapula is tremendous with great diversity.



You can do a variety of activities at Mapula including game drives, night drives, walks, and explore the Delta in the traditional mode of transportation – the mokoro, a dugout canoe that is poled along by a local guide. Mapula also has a motor boat to explore the deeper channels and provide a full Okavango experience. Fly camping and visits to Gudigwa Village, home of the Bukakwe bushman, can also be arranged as advance requests.

Putting your feet on the ground on a walking safari at Mapula Lodge delivers a new unfiltered experience connecting you to the African past deeply buried within each of us, a connection to your ancient homeland where the human species originated.



The chalets at Mapula Lodge are unique - combining the feel of a chalet structure with a tent as the entire back of the chalet is screened mesh letting in the wild sounds and allowing private views out to the lagoon at Mapula and the hippos, elephants, fish eagles and multitude of other species that are commonly seen.



The camp at Mapula Lodge has a magical setting on the edge of a magnificent lagoon. The common area is large and comfortable and includes a bar with a location that can't be beat.



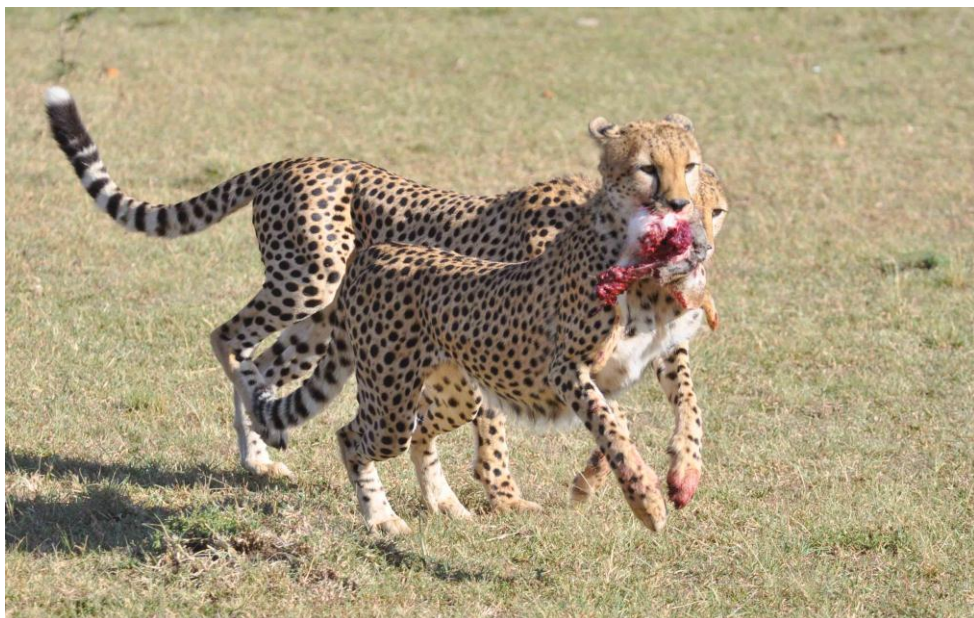
While the wildlife is excellent at Mapula, the wonderful people will leave a lasting impression as well! Mapula Lodge staff is like a village and they welcome you with caring and kindness. Virtually the entire Mapula Lodge staff consists of couples, which is very rare in safari camps and it makes a noticeable difference and feels as if you are visiting their home as opposed to place of employment.



## Kwara Camp, Okavango Delta for 3 Nights



Kwara Camp is located within one of the largest (almost half a million acres) private concession areas in all of Botswana, and it is also one of the richest for wildlife. The area is very diverse including permanent waters of the Okavango Delta, wide open plains, mopane woodlands, and palm islands. Kwara is part of the legendary Kwando Camps, known for their hard core dedication for game viewing. Kwara concession is rich in predators and this area has been one of the most productive for cheetah, leopard, and lion sightings. For a couple years now a coalition of three cheetah brothers have been frequently sighted, and there is an amazing coalition of seven male lions associated with the seven sisters pride.





Kwara Camp is able to offer a great diversity of activities including power boating, mokoro (dug out canoe) trips, walks and game drives. Kwara camp comprises just 8 twin-bedded rustic safari style tents accommodating a maximum of 16 guests. The tents are built on raised teak decks each with en-suite facilities. The intimate dining and lounge area is under thatch, built around a large shade tree overlooking the lagoon. Kwara has a small gift shop, lounge, dining room and small plunge pool. The camp is simple but comfortable and the setting is spectacular with wonderful sounds from hippos and birds.



## Kwando Lagoon Camp, Kwando/Linyanti Area – 3 Nights



The renowned Kwando concession is over half a million acres but contains just two small camps that are 30 kilometers apart. Lagoon has built its reputation on action packed gameviewing, with dedicated tracking, tremendous guiding and making the pursuit of wildlife sightings the priority. Kwando uses unique vehicles, the URI, a workhorse vehicle that was custom designed by a farmer in the Kalahari desert of Namibia to deal with the rigors of off road driving and this allows for exciting off road pursuit under special circumstances such as African wild dogs on the hunt.



Predators are diverse with lion, wild dog, hyena, leopard and cheetah all frequently seen, currently wild dogs and cheetah are especially prevalent. Night drives can be particularly productive with lots of smaller carnivores in the area such as serval, caracal, honey badger, African wildcat, genet and civet. In areas of open grasslands and pan systems there is a plentiful variety of game with impala, red lechwe, steenbok, reedbuck, wildebeest, buffalo, giraffe, tsessebe, kudu, zebra, waterbuck, sable, and roan in the area.



Kwando Lagoon Camp was just rebuilt in March 2011 and comprises 8 spaciouly designed tents with views over the private lagoon formed by the ever-changing Kwando River. Each tent comprises a bedroom area with a spacious bathroom en suite. The bathroom has a double basin set in an indigenous Mukwa wood stand and a flush loo. The spacious outdoor reeded showers capture the essence of Africa that is Kwando.

The tents are furnished in the best teak furniture that Zimbabwean master craftsmen can create. The shady cool interiors are produced by a canvas flysheet under shade cloth, which are also set under massive Ebony and Marula trees with shady lawns. A small plunge pool is available to cool off during the long summer days. The resident hippos entertain our guests as they sit in the deck chairs, on the decks in front of their tents.



There is a wonderful communal area to relax during the mid-day where you may possibly see an elephant approach, as well as a plunge pool. Food is hearty and the staff provides a very welcoming atmosphere at this camp. Activities here focus on game drives and boat cruises, which is appropriate because it is such a productive area and the guide/tracker system is a point of emphasis to deliver the maximum experience.

